

ROTARY SOLUTIONS CATALOGUE



WAIKATO®
MILKING SYSTEMS



When you invest in a milking system, you want a system which is superbly designed, robust, reliable and easy to use.

2026 Edition

waikatomilking.com

*Growing the value of
precision dairy farming*





ROTARY SOLUTIONS CATALOGUE

Contents	3
Our Company - Our History	4
Why Choose Us	5
Rotary Milking Systems	7
Evolution of Rotary Milking Systems	8
Why choose a Rotary Milking System	9
Orbit Concrete Rotary	10
Centrus Composite Rotary	14
Velocity Cabinet Rotary	18
Enhance Operational Efficiency	24
Systems Comparison	26
Milking Point	27
ECR-S ACR's / Detachers	28
ECR Plus ACR's / Detachers	30
Vortex	32
Cow Restraints	33
Electronic Milk Meter	34
Yield Indicator	36
WMS Sampler	38
User Display	39
320 Standard Milking Cluster	40
320HP High Performance Milking Cluster	41
SmartD-TECT - Udder Health Detection	42
Animal Management	45
CowTRAQ™ Cow Collars	46
DairyHQ™ Parlour Management System	50
DairyHQ™ ID	52
DairyHQ™ Feed	53
DairyHQ™ Sort	54
DairyHQ™ Milk	55
Platform Positioning System	56
SortGATE 2600	57
SortGATE 5500	58
Hygiene	59
SmartSPRAY - Automatic Teat Spray System	60
Waikato Spray Arm	62
WalkoverSPRAYER	64
SmartWASH - Automatic Wash System	66
Planning Your Dairy	68
Things to Consider	69



HUMBLE BEGINNINGS OVER 50 YEARS AGO

Waikato Milking Systems was founded with a solid commitment to design, develop and manufacture evolutionary milking equipment for dairy farmers - worldwide.

OVER 50 YEARS AGO... born in New Zealand's dairy heartland, our pioneering spirit has earned us an international reputation for innovation and excellence in dairying, animal welfare, food production and environmental sustainability.

At our state-of-the-art global headquarters, we design and manufacture dairy technology that enables farmers around the world to grow the value of their dairy - by running more productive, cost-efficient and profitable operations.

We stand behind our solutions, and all around the world farmers know they can rely on our products and systems to perform, and last the distance.

WE UNDERSTAND FARMING

Because we understand farming - from small family-owned farms, through to large-scale intensive 24/7 operations, and from cows to goats and sheep - we are able to deliver products and systems to suit any budget, and any farming type - and we can customise solutions to fit any farm's specific requirements.

What our farmers value, is different for each and every one of them... and our world, and our industry is changing. So we're always listening, collaborating, and looking ahead with them, continually innovating, designing and engineering solutions to grow their success, and our industry's.

Waikato Milking Systems' global headquarters and engineering divisions are located in New Zealand and we have offices and warehouses in Australia, USA, United Kingdom, Ireland and China with agents in every dairying nation in the world.

YOUR SUCCESS IS OUR PRIORITY

Through the development of smart technologies and the future of milking technology, we are enabling farmers throughout the world to make the most informed decisions for their farm today, and in the future:



CUSTOMERS TRUST US THE WORLD OVER

Our unwavering commitment to continually push the boundaries in the design of high-performing milking solutions and dairy technology, is why our world-leading systems are trusted by large commercial farmers the world over.

With the most comprehensive range of rotary technologies for cows, sheep and goats available, our proven systems have been developed for high yielding herds, so our commercial customers can run more productive, cost-efficient and profitable operations 24/7. Manufactured from high-performance materials, our composite rotary platforms are structurally stronger, significantly lighter, and longer-lasting to withstand the harshest of milking environments.



WE HELP DRIVE DAIRY PERFORMANCE AND PRODUCTIVITY THROUGH SMART-TECH

To drive dairy performance, production and productivity, smart technologies are at the very core of our product design and development. The collection of individual cow and herd data, combined with a complete overview of the milking system is more important than ever. By providing you with insights and intelligent, adaptive automation at your fingertips, you can improve your milking productivity and performance.

Increasing milking efficiency and speed, and reducing the effort required at milking time promotes an efficient, natural let-down response to improve milk quality and creates a much calmer operator-friendly environment. By providing you with the tools to automatically collect and monitor milking data so you know your animal's production data every day - we put you in full control, right where you need to be.



WE TRACK AND MONITOR YOUR MOST VALUABLE ASSETS

To allow you to maximise your herd performance and efficiency we're continually developing smart technologies that drive real-time, data-driven insights to enable you to make better, more informed management decisions to improve the overall productivity and profitability of your farm.

By tracking and monitoring individual cows and herd performance trends 24/7, we are empowering you to "know your cows, track your herd" so you can take control of cow health, heat detection and nutrition management - to maximise labour efficiency and improve your bottom line.



WE ARE PIONEERING THE SEMI-ROBOTIC REVOLUTION

With a strong focus on innovation, we've set our sights on achieving ambitious goals to break existing productivity barriers and lead our farmers into the future with new ground-breaking technologies.

By taking a milking science based approach, we are pioneering a semi-robotic revolution with the goal of significantly reducing the workload at milking time, so an operator can milk more cows per hour with less labour. These smart technologies will eliminate the challenges of manual operations, streamline the milking process and improve hygiene and milk quality.

By focussing on significantly reducing the effort required in milking, we will also increase the well-being of operators while improving their dairy performance and productivity.





ROTARY MILKING SYSTEMS

ROTARY MILKING SYSTEMS

ROTARY MILKING SYSTEMS

When you invest in a milking system, you want a system which is superbly designed, robust, reliable and easy to use.

KIWI INGENUITY HAS BEEN REVOLUTIONISING THE DAIRY INDUSTRY GLOBALLY FOR MORE THAN 100 YEARS...



1917

- In 1917 **Norman Daysh**, a little-known farmer from Pahiatua revolutionised dairy farming around the world by launching the **first mechanised milking system**.



1952

- In 1952, after being tired of stooping down to attach the cluster to the cow, Waikato farmer **Ronald Sharp** invented what is now known as the **herringbone cowshed**.



1968

- Then in the late 1960s, Taranaki farmer **Merv Hicks** turned milking around with his invention of the **rotary milking platform**. The turnstile design was a revolution in breaking the barriers of how many cows could be milked in an hour.

WHEN YOU INVEST IN A MILKING SYSTEM, YOU WANT A SYSTEM WHICH IS SUPERBLY DESIGNED, ROBUST, RELIABLE AND EASY TO USE.

A modern rotary milking system coupled with key automation technology can provide critical advantages to help fine tune and improve the overall performance of your unique dairy operation. Increases in herd sizes has prompted recent investment in rotary technology as dairy operators look for more efficient systems to milk their herd. The global labour shortage has also fueled more interest in rotary systems because of their ability to milk more cows with fewer people.

Platform performance

Rotary platforms can range from 28 to 80 points although some have been manufactured in larger sizes, up to 140 points for commercial dairy farms. The number of points designed for a rotary depends on the size of the herd and any future plans for herd expansion. Research suggests a rotary system becomes the dairy type of choice once herd sizes grow beyond 500 cows. A rotary can be fine tuned to achieve optimum milking time by adjusting the rotation speed of the platform to meet the dairy farm's milking strategy.

Research and development

There has been extensive research and development to refine rotary milking systems to meet the needs of a modern dairy farm operator. Coupled with milking automation technology such as automatic cup removers, automatic teat spray and auto sorting, rotary systems can deliver higher efficiency and productivity outcomes for your dairy operation. More advanced automation options can be added later on to gain even more efficiencies, such as milk meters, yield indicators, advanced pulsation systems with teat health detection capability and auto plant wash systems.

Rotary milking system solutions provide higher gains for farmers but with lower labour requirements, providing more time for staff to attend to other important jobs outside of the milking parlour.

Cow comfort and cow flow are paramount at milking time and rotary systems can be configured for quiet operation which makes for a more relaxed environment for the animals and the operator to work in. Strategic design and placement of entry and exit points ensure good cow flow less affected by operator-animal interaction.

ORBIT CONCRETE ROTARY MILKING SYSTEM

Providing a clean, fast milking environment, excellent cow flow with easily accessible milking equipment.

INCREASED EFFICIENCY, REDUCED LABOUR COSTS - ORBITS ARE SOLID, PROVEN AND RELIABLE

Orbit Concrete Rotary Milking Systems have been serving dairy farms around the world for nearly quarter of a century and continue to be a popular choice among family orientated farms as well as commercial dairy operations.

The strength and integrity of an Orbit Concrete Rotary Milking System have earned it a reputation for reliability, longevity and proven technology. This makes it an ideal foundation system, delivering an excellent return on investment.

The Orbit is designed to provide a safe, clear, and efficient milking environment for both animals and operators. The stall work allows easy access to the milking equipment, and the overall design works together to enhance milking efficiency.

Orbit Rotary Milking Systems are designed to integrate seamlessly with the range of Waikato Milking Systems' automation technology. The Orbit System is fully upgradable, allowing for the addition of new automation options when needed, whether to accommodate herd expansion or when the budget allows.



ADVANTAGES



Easy to install, easy to use

The Orbit's SmartFIT mounting systems allows the milking machine equipment to be quickly and accurately attached to the rotary platform. Bolting on instead of welding reduces chance of corrosion.



Smooth, quiet and efficient milking

The Orbit features a unique design with deck ports integrated into the stall work, ensuring optimal cluster alignment and easy application. Its Multi-Roller system evenly distributes weight to reduce wear, minimise maintenance, and eliminate the need for costly consumables like wear strips.



Superior protection of milking equipment

The 2.7m width of the Orbit platform provides excellent protection for milking and electronic equipment. The deck slopes outward, ensuring that effluent runs to the outside of the platform, keeping the equipment clean.



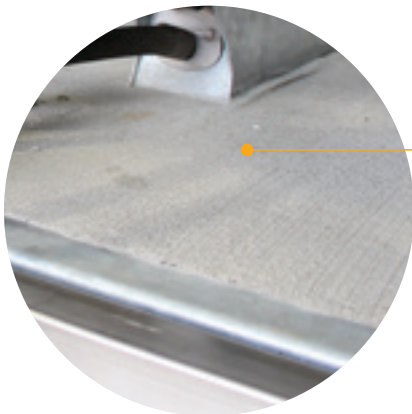
Full compatibility

The Orbit is compatible with the range of Waikato Milking Systems automation technology to help optimise your dairy operation. Our Research and Development team continues to develop new automation equipment to make further advances in efficiency and productivity for dairy farms.



ORBIT CONCRETE

What makes it a good solid choice...



100mm



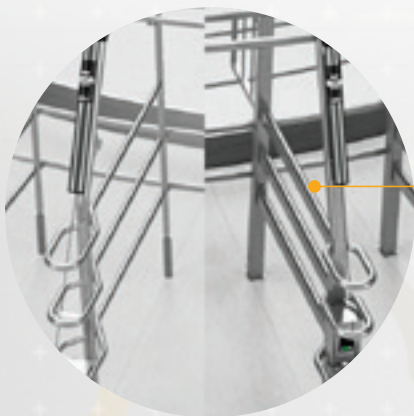
100mm Concrete Deck

The 100mm thickness of the concrete deck provides greater strength. The concrete deck of the Orbit is 35 years proven and has a reputation for its provided longevity. It's a well-known choice for farmers all around the world.



Cost Effective

The Orbit Concrete Rotary System is a cost-effective option to convert your farm to a modern-day rotary system. Investing in the base Orbit system is a future-proofed path with the ability to add in automation technology when you're ready.



Multiple Stall Options

The Orbit Concrete Rotary System has a selection of stall options to suit varying farm types. Choose from our Standard Domestic or Heavy-Duty stalls. The Heavy-Duty stalls are also available in galvanised steel or stainless steel.



Fixed Stainless Steel Skirt

The Orbit comes standard with a fixed stainless-steel skirt. This keeps water away from the inside under carriage of the rotary, keeping vital components dry, all year round.





SCAN

TO WATCH VIDEO AND
LEARN MORE

Milking Clusters

Heavy Duty Sub Frame

CENTRUS COMPOSITE ROTARY MILKING SYSTEM

Hard-working milking performance, that won't let you down.

CONSTRUCTED FOR PERFORMANCE, RELIABILITY AND LONGEVITY

The Centrus Composite Rotary Milking System is a groundbreaking system designed to deliver unrivalled performance and productivity 24/7.

Engineered for continuous operation, even during cleaning, Centrus enables large-scale farms to operate more efficiently and profitably around the clock. Its composite construction offers unparalleled strength, making it lighter, longer-lasting, and more resilient in even the harshest milking environments.

This award-winning user-friendly system is trusted by farmers worldwide for its ability to improve the milking environment. The lightweight design of Centrus reduces the load on the running gear and creates a quieter, more comfortable milking environment. With advanced features that streamline operations, Centrus maximises efficiency, making the milking process easier and more productive.



ADVANTAGES



Built with extreme precision, for superior strength

The Centrus system is precision engineered to exacting standards and specifications in our state-of-the-art factory environment to ensure superior strength and a superior finish when compared with traditional concrete platforms.



Less weight, less maintenance on running gear

The Centrus system's lightweight composite panel construction provides a 20 ton weight reduction on a typical 50 point concrete deck rotary - reducing the load on the roller assemblies and drives by approximately 33% to improve the working load limits and reducing wear and tear.



A quieter, safer working environment

The Centrus system's platform construction incorporates resin-bonded fiberglass layers and encapsulated foam to provide a quieter working environment for the operators and cows. The system also incorporates specially formulated rubber mats to ensure cow comfort and slip-resistant footing, and providing a safer, quieter working environment.



Structural integrity and Chemical Resistance

The Centrus system's multi-layer fiberglass composite construction makes it structurally superior to concrete platforms, and provides superior resistance to harmful chemicals, acids and manure.



CENTRUS COMPOSITE

What makes it a superior option...



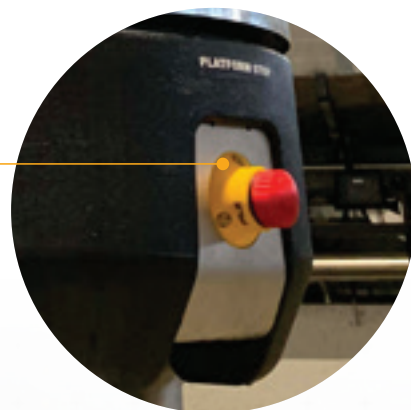
24/7 performance and productivity

Engineered for continuous operation, even during cleaning, the system enables large-scale farms to maximise efficiency and profitability while maintaining optimal milking conditions around the clock.



Faster stopping power

The design allows for fast stopping power, enabling rapid and reliable halting of the platform when necessary. This feature enhances operator safety and provides greater control, ensuring a secure and efficient milking environment for both cows and operators.



Future-proof design

The system's future-proof design allows for easy upgrades and integration of new technologies, ensuring adaptability to evolving industry standards. This flexibility enables farms to enhance efficiency and performance without significant investments in new equipment or infrastructure.



Quick installation, long-term durability

The system retrofits into existing sheds with no building modifications, reducing downtime and simplifying upgrades. The composite platform flexes under pressure, preventing cracks common in concrete, ensuring long-term durability. With no curing time, farms can begin operations immediately after installation.





SCAN

TO WATCH VIDEO AND
LEARN MORE

Easy Upgrades

*Add automation such as
ECR's, SmartSPRAY and
Electronic Milk Meters*

**Lightweight
Composite Deck**
*Capable of constant
operation while reducing
wear and tear.*

Rubber Mats
For cow health

VELOCITY CABINET ROTARY MILKING SYSTEM

Advanced milking performance, that is second to none.

HIGH-VELOCITY FOR UNSTOPPABLE PERFORMANCE

Your farm never stops, and neither does the Velocity Cabinet Rotary Milking System. True to its name, this system is designed to increase your milking speed, productivity, and performance.

With low-profile cabinets that house the milking equipment and separate the cows, Velocity enables animals to flow on and off the platform with less effort and at a higher speed. The low-profile cabinet stall also contributes to a more efficient, safe, and comfortable milking experience for both cows and operators.

Velocity is a state-of-the-art system built to meet the demands of even the busiest commercial farms, ensuring more productive, cost-efficient, and profitable operations 24/7.

Constructed to withstand the harshest milking environments for generations, Velocity is equipped with pneumatic detachers and a robust cluster & hose arm. These features ensure excellent cluster alignment and removal, reducing workload and improving milking performance.

Trusted by farmers worldwide, our award-winning Velocity Cabinet Rotary Milking System represents over three decades of expertise, innovation, and strong partnerships with farmers who demand the best.



ADVANTAGES



Robust stainless steel cabinet and stallwork with fully integrated milking equipment

The cabinet contains the pneumatic detacher, automation display, multi-function touch-button and CIP unit.



Clever cluster arm and pneumatic detachers with easy adjustment

The cluster arm guides the cluster into the correct milking position and swings out of the way on detachment. The retraction cord can be adjusted from the front of the cabinet with a simple tool, making maintenance easy.



Faster cow movement with minimum physical barriers

The low-profile cabinet ensures smooth, efficient cow entry and exit. Its open design promotes faster movement, minimising stress and preventing bottlenecks, while maintaining a safe, unobstructed flow for both cows and operators.



Decades of innovation

Building on three decades of rotary system expertise, our Velocity Cabinet Rotary Milking System is designed with the farmer in mind, delivering proven performance and innovation.



VELOCITY CABINET

What makes it worth the investment...



Easy washup for the Cabinet, stall and the milking equipment

The outer stainless steel cabinet is easy to clean. The cluster washer folds out for attachment to the teatcups and retracts for milking. A secondary cover reduces water ingress while the CIP is in use.



Smooth edges for a safer milking experience

The smooth edges of the cabinet are designed to prevent injury and discomfort for cows during milking. By reducing sharp corners and abrasive surfaces, the system ensures a safer, gentler experience, promoting cow welfare and reducing stress.



Upgradeable Automation

The system features upgradeable automation, allowing easy integration of new technologies as they become available. This flexibility ensures operations can continually improve efficiency, enhance milking performance, and adapt to evolving industry needs without requiring extensive modifications.



Integrated System

The integrated system combines milking, monitoring, and detachment in one seamless process. It automatically adjusts to each cow's needs, reducing manual effort while ensuring efficient, consistent milking and improving cow comfort.



ROTARY MILKING SYSTEMS



SCAN

TO WATCH VIDEO AND
LEARN MORE

*The Velocity operates
smooth and quiet,
providing calm conditions
for cows.*

*Low-profile cabinets
provide more space and
freedom of movement for
animal comfort*

*Smart milking technology
aids in preventing
over-milking, creating
a comfortable milking
environment for cows*

VELOCITY CABINET

Choose your deck option...

Velocity on a **Concrete Deck**

Recognised for its strength and integrity, the traditional concrete rotary platform has long been trusted by farmers worldwide. Built to withstand the demands of daily milking, this concrete deck option provides a stable and reliable foundation for your operations. Designed with reliability in mind, the concrete platform ensures consistent performance over the years, making it a cost-effective choice for farmers seeking time-tested reliability in their milking system.



Velocity on a **Composite Deck**

Waikato Milking Systems' composite platform technology has been heralded as the most significant evolution in rotary platform design in 50 years. Our high-performance composite technology makes the Velocity platform structurally stronger, chemically resistant, and more capable in any milking application - as well as being extremely quiet, lightweight, durable, and easy to clean.



With correct care and maintenance, the platform is designed to maintain its integrity and resist pitting or cracking from exposure to effluent and harsh chemicals, ensuring long-lasting performance.

The composite deck sections are formed using a multilayered lamination process similar to that used in the construction of high-performance aircraft and boats, resulting in a deck that is 75% lighter and significantly more durable than traditional concrete or steel alternatives.

The dramatic reduction in the weight of the platform means your roller life will be extended, reducing the cost of ownership. The lightweight platform also features impressive stopping power, allowing it to be stopped quickly in the event of an issue or emergency - without causing injury to cows. The composite deck comes equipped with interlocking rubber mats as a standard feature.



The platform is designed and built with extreme precision for performance, reliability, and durability



The multi-layered laminated composite deck sections are structurally superior and extremely capable in any milking application



The deck is up to 75% lighter and more durable than traditional concrete or steel alternatives, reducing wear and tear



The platform's construction incorporates resin-bonded fiberglass layers and encapsulated foam to provide a quieter working environment.

ROTARY MILKING SYSTEMS



Rubber Mats
For Cow Health

ENHANCE OPERATIONAL EFFICIENCY

Of your rotary platform with additional features...



- **STALL WORK: HEAVY DUTY GALVANISED**

For large scale 24/7 dairy operations and larger livestock. The HD Bails provide a level of strength and durability which will exceed the requirements of the most demanding dairy environment.

** Velocity Excluded*



- **STALL WORK: HEAVY DUTY STAINLESS STEEL**

Stainless steel is resistant to chemical spray and effluent making the stallwork easy to clean and maintain. Designed for use in 24 hour parlours and suitable for larger livestock.

** Velocity Excluded*



- **FEED BINS**

Stainless steel feed bins, enable feeding during milking. This allows for individual cow feeding to avoid overfeeding and digestive issues, leading to better cow health and milk production



- **HEAD DIVIDERS**

The head divider between the bails prevents "feed robbing". Multiple head feed systems are available and can be linked to a herd management system.



- **DRY EDGE / STAINLESS PERIMETER RAIL**

The design of the edge allows water to drain away, rather than onto the operator. The stainless-steel finish allows the edge to be easily washed or cleaned when needed.

ROTARY MILKING SYSTEMS



○ PLATFORM OPERATOR CONSOLE: **CUPS OFF**

A second Operator Console with a 3.4-inch screen can be added to the platform bridge for convenience. Both consoles have the same functions, providing easier access to controls and alerts at cups on and cups off points.



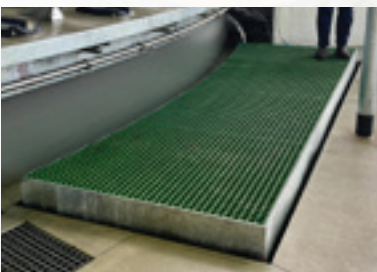
○ PLATFORM OPERATOR CONSOLE: **E-STOP**

Located at cups off position in the parlour, the E-Stop Console brings the platform to a complete stop when activated, in case of an emergency. The platform can then be restarted by using the main Operator Console located at cups on.



○ **DROP DOWN VET PLATFORM**

The Vet Platform from Waikato Milking Systems is a durable, easy-to-use product designed for flexibility in the dairy. It can be positioned as needed for treating animals and stored away when not in use, ensuring safety and practicality.



○ **OPERATOR LIFT**

The OperatorLIFT is an electronic, height adjustable floor that ensures a safe, ergonomic workspace for operators of all heights. The OperatorLIFT can accommodate multiple workers, maximising space and workflow.

SYSTEMS COMPARISON

Below is a chart that compares the range of specifications across our 3 rotary systems, so you can compare and see what best fits your requirements.



ORBIT CONCRETE ROTARY MILKING SYSTEM

100mm concrete platform

Reliability and longevity

Heavy duty galvanised subframe

Extra wide 2.7m platform

Full circumference control and
emergency stop ropes

Full circumference Rump and Kick Rail

Multi-roller system ensures smooth,
low-maintenance operation

CENTRUS COMPOSITE ROTARY MILKING SYSTEM

Lightweight composite platform

Reduces wear and maintenance

Engineered for continuous 24/7
operation, even during cleaning cycles

Precision-engineered for superior
structural strength

Superior resistance to chemicals and
harsh environments

Heavy duty galvanised subframe

Extra wide 2.7m platform

Rubbermats for cow comfort

Full circumference control and
emergency stop ropes

Full circumference Rump and Kick Rail

Multi Roller

VELOCITY CABINET ROTARY MILKING SYSTEM

Choice of lightweight composite
platform or our foundation 100mm
concrete platform

Low-profile cabinets enable faster
animal entry and exit

Increase milking speed and
performance

Ergonomic cluster arm simplifies
detachment and reduces operator
effort

Optimises cow comfort and operator
efficiency for stress-free milking

Suitable for high-velocity 24/7
operation

Heavy duty galvanised subframe

Extra wide 2.7m platform

Rubbermats for cow comfort

Full circumference control and
emergency stop ropes

Full circumference Rump and Kick Rail

Multi Roller



MILKING POINT

Reduce your labour costs and maximise your productivity with our range of state-of-the-art automated technologies.

ECR-S ACRs / DETACHERS

Reduce your labour requirements and improve your milking consistency and efficiency.

AUTOMATICALLY REMOVE CUPS, AND REDUCE YOUR LABOUR COSTS

The ECR-S is a robust, easy to use and dependable ACR / Detacher that reduces labour requirements, while cleanly, consistently and accurately milking out your herd.

The ECR-S has been designed to make the milking process quicker and easier for the operator, while accurate flow sensing provides peace of mind that the herd is being milked out correctly every time.

Suitable for all milking machines, the milking parameters can be easily adjusted to suit your farm's requirements via the ECR Controller. This ensures all ACR / Detachers are set the same - and milk each animal the same.

In rotary dairies ECR-S can control the Cow Restraints to retain cows for alerts or longer milkings. ECR-S can also control the SmartSPRAY system to teat spray cows at the end of milking, to further reduce labour and improve udder and animal health.



ControlSWITCH works with ECR-S, giving highly visible alerts for operator feedback on cow alerts and machine status



ADVANTAGES

ECR-S allows you to milk out your herd consistently and accurately, while reducing labour.



Centralised control

Global communication from the ECR Controller allows the adjustment of milking parameters for all detachers from one place.



Reduces effort and fatigue

The Ezy start feature and Ezy Pull-Down valve reduces operator fatigue by reducing the effort needed to attach the cluster.



Gentle on the cow and stallwork

The retraction speed adjustment allows for a gentle disconnect from the udder and stops the cluster crashing into stallwork.



Indicates the status of the ECR

Note: Not available on Velocity Cabinet Rotary Milking System



ECR PLUS ACRs / DETACHERS

Maximise your milking automation and efficiency, and make the most informed management decisions.

AUTOMATE YOUR MILKING, AND FUTURE-PROOF YOUR MILKING SYSTEMS

The ECR Plus combines the most advanced ACR / Detacher functions with the collection and communication of milking information configured to suit your farms individual requirements.

Designed to be the heart of your milking automation, ECR Plus allows you to add other milking automation devices using our Plug 'n' Play technology to collect important real-time information from your herd. These can include yield, flow rates, milking time, and the ability to control pulsation and measure milk conductivity for udder health issues and display alerts.

The ECR Plus system is designed to integrate with the DairyHQ™ Dairy Management software which enables powerful features including staff alerts for withholding cows as they enter the machine, and identifying abnormal milkings as they occur. The milking data generated by the ECR Plus system and connected devices can also be used within the DairyHQ™ Dairy Management software to make timely and informed decisions for your milking herd.



SCAN

TO WATCH VIDEO AND
LEARN MORE



ControlSWITCH works with ECR-S, giving highly visible alerts for operator feedback on cow alerts and machine status

DairyHQ™ Dairy Management System



ADVANTAGES

ECR Plus maximises milking automaton and efficiency, and the collection and communication of your milking information.



Feature-packed automation technology

Includes all features of the ECR-S system plus Claw Drop, Pre-Spray and Fixed Point Take Off



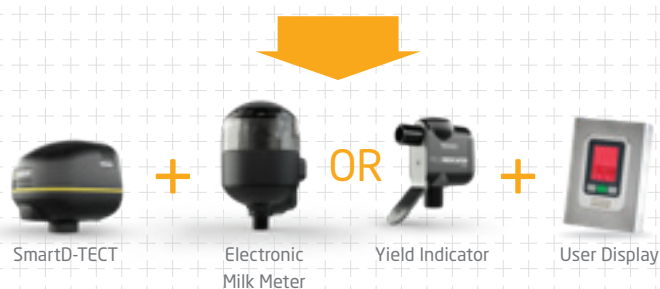
Powerful data management and communication

Seamless integration with our DairyHQ™ Dairy Management System allows for milking alarms and much more



Future-proof your milking system

True Plug 'n' Play technology can be configured to suit your milking requirements today, while allowing for future expansion by simply plugging in new technology



Indicates the status of the ECR

Note: Not available on Velocity Cabinet Rotary Milking System



VORTEX SHUT OFF VALVE

Ensure high performance vacuum at milking time.

MAINTAIN STABLE TEAT END VACUUM AT HIGH MILK FLOW RATES

A combination high flow milk sensor and shut off valve for stable teat end vacuum.

Located under the platform and attached to the milk line, the Vortex is a crucial part of the milk extraction process.

The Vortex Shut off quickly evacuates milk using a unique spiraling action, which creates a whirlpool effect in the valve. This provides a gentle path for the milk whilst ensuring a continuous vacuum path through the valve.

Designed to maintain stable teat end vacuum at high milk flow rates, the Vortex Shut Off Valve is essential for achieving a fast and consistent milking routine while maximising teat end and udder health.

ADVANTAGES

The Vortex Shut Off Valve combines a high-performance milk flow sensor and shut off valve to ensure a fast and consistent milking routine.



2 in 1

A combination high flow milk sensor and shutoff valve



Stable vacuum at all times

No recordable vacuum drop through the device during milking.



Efficient Milk Extraction

Whirlpool action evacuates milk smoothly and efficiently.



COW RESTRAINTS COW RETENTION

Restrain your cows automatically and save time and money.

MAKE COW RESTRAINT AND MANAGEMENT EASIER, AUTOMATICALLY

Cow Restraints are automatically lowered and raised, when used in conjunction with ECR-S or ECR Plus cup removers, making it easier to manage animals on your rotary platform.

The Cow Restraints, activated by a hydraulic ram, can be configured to either drop automatically after cupping or remain up until an alert is triggered.

Retaining the cow on alert can be pre-configured to suit operational requirements.

The Cow Restraints are made from flexible but durable plastic and can easily be retrofitted into existing farm dairies.

ADVANTAGES

Cow Restraints save on labour by allowing you to restrain your cows automatically.



Save time and money

Saves labour by eliminating the need for an operator at Cups Off



Optional lower setting only

Can be set to only lower the Cow Restraints if needed (alarms or still milking at bridge)



Customisable alarms

Select which alarms will retain an animal to suit your farm's milking procedures



Note: Not available on Velocity Cabinet Rotary Milking System

ELECTRONIC MILK METER

Real-time milking data to monitor and improve your herd's productivity and performance.

MONITOR YOUR MILKING PERFORMANCE, IN REAL-TIME.

The Waikato Electronic Milk Meter provides you with real-time information on the performance of your cows to deliver an accurate and clear picture of how each animal is performing, at every milking.

By supplying you with valuable data on milk yield, flow rates and milking duration in addition to milking volume, the Electronic Milk Meter provides a milking profile of each animal to show how she milks.

This can be an indicator of milking procedure performance and cow comfort. This data allows you to make important herd management decisions including feed regimes for each animal, breeding and possible veterinary actions to ensure your entire herd is performing to its optimum level.

Simplicity is at the heart of our design philosophy. That's why we've made the Electronic Milk Meter easy to disassemble without the need for tools. The screw cap can be unwound and the lid of the meter lifts off to provide access to the meter's centre and outer chamber, its sensing pins and breather snorkel.

The cylindrical design of the meter ensures thorough cleaning as wash water "dead zones" are eliminated. During plant washing, timed pulses of air are admitted into the meter body to create turbulence and ensure a pristine clean every time.



ADVANTAGES

The Electronic Milk Meter provides real-time information on the performance of your cows.



High accuracy metering

Highly accurate milking data you can rely on to make important herd management decisions.



Claw vacuum stability

Designed to suit high flow rate milking while maintaining stable teat end vacuum.



Monitor every animal, every milking

Know exactly how each animal is performing at every milking.

The User Display provides the operator with the status of each animal, and includes any alerts that may have occurred.



YIELD INDICATOR

Improve your herd management decisions by monitoring every animal's milking performance.

THE COST-EFFECTIVE WAY TO MEASURE MILK VOLUME.

The Waikato Milking Systems Yield Indicator is a cost-effective unit that measures your milk volume allowing you to monitor every animal's milking performance to improve your herd management decisions.

The Yield Indicator works in conjunction with the milking point controller, by counting and timing milk slugs across the internal probes. Featuring no moving parts and a single long-life gasket, the robust design of the Yield Indicator ensures reliability with low maintenance and operational costs.

The unit's ingress protection (IP) makes it suitable for use within all milking parlour environments.

By providing you with milk volume data, the Yield Indicator allows you to understand which animals are the highest and lowest performers so you can make more informed management decisions - at an entry level price.



ADVANTAGES

The Waikato Milking Systems Yield Indicator is the cost-effective way to monitor every animal's milking performance.



Suitable for all milking parlor environments

Options available for cows (high flow) and sheep/goats (low flow), and can be used in both low line and high line milking parlors.



Easy to install, built to last

Featuring quality components (glass filled nylon polymer with a stainless steel bracket) for durability and reliability.



Individual animal yield recording

When combined with a suitable milking point controller, every animal's milking performance can be monitored.

3 models available:

YI2500 Standard yield
Suits 19mm milk lines
Suits most bovine parlours

YI2500XL For high flow applications
Suits 22mm milk lines

YI2500SR Suitable for small ruminant milking
(Sheep and Goat)



WMS SAMPLER

Monitor your herds health and productivity.

MILKING SAMPLES MADE EASY FOR ESSENTIAL HERD MANAGEMENT.

The WMS Sampler delivers precise, dependable milk samples, empowering you to monitor and optimise the health and productivity of your dairy herd with confidence.

Capturing a proportional, representative sample straight from the milk stream, the WMS Sampler delivers an accurate snapshot of milk composition.

This precision is essential for evaluating a cow's productivity, monitoring its health, and maintaining milk quality—critical elements for making informed decisions that drive herd performance.

Featuring a compact and user-friendly design, the WMS Sampler is constructed from durable, food-grade plastic, ensuring easy cleaning, installation and maintenance.

ADVANTAGES

The WMS Sampler allows you to track important data on your herds performance.



Clear overview of your herds performance

Monitors your herd's productivity and health through accurate, precise milk samples, providing a clear overview of milk composition.



Clean in Place

Equipped with Clean In Place (CIP) features and built from food-grade plastic, the WMS Sampler ensures safe, accurate samples every time.



Designed for simplicity and effectiveness

Thanks to its simple, compact design, installation is straightforward, and servicing remains easy and cost-effective.



USER DISPLAY

Monitor each animal's status in real-time, and detect issues immediately.

REAL-TIME MILKING INFORMATION AND ALERTS, ON DISPLAY.

The User Display provides the operator with the status of each animal, and includes any alerts that may have occurred.

Mounted on the stall and out of the way of your milking operation, the User Display features a backlit LCD display with large characters making the information and data quick and easy to read.

Different coloured flashing LEDs illuminate the User Display when there is an alert - making it easy for the operator to identify an issue and take appropriate action quickly and effectively.

With a robust stainless steel housing, the User Display is protected from day-to-day impacts and the parlour environment.

ADVANTAGES

The User Display allows you to monitor real-time milking information on your animals.



Real-time information and alerts

Displays real-time information including Yield & Flow Rate, Milking Time, Animal ID and Operator Alerts



Animal drafting features

Animals can be drafted from the display via the buttons when connected to a compatible parlour management software product.



Retain cows in stall

Manual retain cow in stall with optional Cow Restraint features.



320 STANDARD MILKING CLUSTER

An entry-level milking cluster designed to optimise the milk harvesting process.

OPTIMISE YOUR MILK HARVESTING PROCESS WITH AN INDUSTRY PROVEN CLUSTER

The 320 Standard Cluster is an entry-level cluster that has been well proven in the market place for many years.

The Waikato Milking Systems' Standard Milking Cluster provides even milk extraction from each quarter for faster, more efficient milking.

Featuring large bore inlets and outlets to improve milk flow and evacuation, while ensuring a stable milking environment. The robust design of the Standard Milking Cluster optimises the milk harvesting process with a lower entry price.

ADVANTAGES

The Standard Milking Cluster provides optimised milk extraction.



Optimise your milk harvesting

Achieving even extraction from each quarter, faster, this ensures a more efficient milking.



High performance cluster

With stainless steel tops, suitable for large bore liners, the 320 Standard Milking Cluster, gives you the performance you need



Five year Claw warranty

The 320 Standard Milking Cluster offers a 5 year warranty on the Claw bowl, giving you peace of mind.



320 HIGH PERFORMANCE CLUSTER

Ergonomically designed for an all round better, more efficient milking.

ERGONOMICALLY DESIGNED FOR OPTIMUM FIT AND ANIMAL COMFORT

The 320HP Milking Cluster has been designed to provide a reduced cluster weight, minimising operator fatigue. Teat condition and udder health is improved for teats of all sizes.

The perfect fit of the vented liner provides you with unsurpassed milk extraction and even milk flow from all quarters. The vented liner improves vacuum stability at high milk flow rates.

The unique design of the claw conforms to the latest cow genetics, with narrow rear inlets to improve cluster alignment and milk flow through the teat canal and high-capacity 5/8" and 3/4" outlet versions to effectively and efficiently move milk away from the teat end during liner closure. With its robust, lightweight and ergonomic design, the 320 High Performance Milking Cluster allows the vacuum, pulsation, liner, and the milking unit to work together to optimise the milk harvesting process.



ADVANTAGES

The 320 High Performance Milking Cluster allows you to achieve the fastest milking speed possible, for maximum efficiency.



Ergonomically designed

Provides the optimum fit for cows of varying udder shapes and sizes, and easy handling for operators of all hand-sizes.



Reduces repetitive strain injuries

The 320HP Milking Cluster is super lightweight, significantly reducing the operator's risk of repetitive strain injuries (RSI)



25% lighter cluster design

Weighs only 1.3kg (2.86 lb) with a 320ml (10.82fl.oz) claw bowl and comes with a 5 year unconditional bowl warranty



Available in 3-A
for USA markets.



SMARTD-TECT UDDER HEALTH DETECTION

Reduce your labour and increase your productivity with SmartD-TECTs automation technology.

REDUCE LABOUR. INCREASE PRODUCTIVITY

SmartD-TECT performs a health analysis of each quarter of the udder by automating your pre-milking stimulation and udder health monitoring without adding additional tasks for the operator.

SmartD-TECT allows you to make data-driven decisions for your herd's health reducing the chance of any loss in productivity. The pulsator milks each quarter separately to measure the conductivity of each teat during the pre-milking phase.

Individual quarter conductivity allows SmartD-TECT to eliminate issues with dilution between quarters to provide highly accurate alerts for potential health problems. If any quarters are abnormal, an alert is issued up to four days before visual signs appear, providing the opportunity for early treatment intervention. T

he pre-milking pulsation for quarter testing also promotes a natural let down response from the cows, eliminating precious time normally spent manually stimulating teats to trigger milk flow. By having the same milking routine each time, cows let their milk down faster, more consistently and at a higher average flow rate.

By removing the variabilities of operators, SmartD-TECT provides consistency in performance and productivity advantages that no other conventional milking system offers.



SCAN

TO WATCH VIDEO AND
LEARN MORE



ADVANTAGES

SmartD-TECT provides peace of mind for a consistent milking routine and the automated detection of problematic animals and potential udder health issues, reducing treatment time and cost.



Udder Health Monitoring

Identify the onset of mastitis up to four days before visual signs are evident to make decisions earlier.



Individual Quarter Testing

The pulsator milks each quarter separately and measures the conductivity of each for a more accurate alert.



Eliminate Forestripping

Automate your milking stimulation and prep routine to reduce labour and increase your productivity.



During the pre-milking phase, SmartD-TECT milks each quarter separately and measures the conductivity





ANIMAL MANAGEMENT

*Reduce your labour costs and maximise your productivity
with our range of state-of-the-art automated technologies.*

COWTRAQ™ COW COLLARS

Maximise herd performance and farm efficiency with Waikato Milking Systems CowTRAQ™ Cow Collars.

KNOW YOUR COWS, TRACK YOUR HERD, IMPROVE YOUR DAIRY

Maximise herd performance and farm efficiency with CowTRAQ™ Cow Collars and elevate the value of your dairy operation through precision dairy farming.

Continuous improvement and a focus on the wellbeing of livestock is a priority for all dairy farmers. Improved production and profitability comes from decisions and actions based on insights.

Insights come from analysing and understanding your herd's performance trends. Your herd's performance trends are shaped by the individual animal's data.

The first step to gain insights about your herd is making sure each cow is identified and connected to her own record. If you don't know your cow, how will you know her impact on your bottom line?



Maximise dairy herd performance and farm efficiency



Monitor production for targeted management



Control cow flow to save time and labour



Optimise production through precision feeding *

* When linked to In-Parlour and Out-of-Parlour feeders

ADVANTAGES

CowTRAQ™ Cow Collars combine an unmatched range of monitoring features and management tools in a highly advanced, yet easy to use system.



Targeted management and optimisation

The system provides monitoring and tools for targeted management, precision feeding and labour efficiency.



Accurate heat detection

Highly accurate heat detection with advice for the optimal insemination moment, as well as reproduction insights.



Individual cow health monitoring

Individual health management for early detection of health issues and intensive monitoring of transition cows and post-treatment recovery.



SCAN

TO WATCH VIDEO AND
LEARN MORE



COWTRAQ™ COW COLLARS *continued...*

Maximise your herd performance and farm efficiency with 24/7 heat and health monitoring for every cow.

24/7 COW MANAGEMENT | ALL-IN-ONE

Waikato Milking Systems CowTRAQ™ Cow Collars combine an unmatched range of monitoring features and management tools in a highly advanced, yet easy to use system.

Real-time information on all devices for multiple users. All team members have access to real-time and relevant insights fitting everyone's needs. At any time and from anywhere with a PC, tablet or smartphone.



Identification*

Proven electronic ISO compliant cow identification in all your automated systems such as milking, feeding and sorting and routing equipment.

* Depends on whether the herd has RFID Ear Tags



Health Monitoring

Individual health management for early detection of health issues and intensive monitoring of transition cows and post-treatment recovery.



Heat Detection

Highly accurate heat detection with advice for the optimal insemination moment, as well as reproduction insights.



Herd Performance Trends

Chart the behaviour patterns of your groups and entire herd. Get group alerts when possible risks affect a group's performance. Evaluate the impact of management decisions on herd performance to make improvements.



Integration & Connection

Easily connect CowTRAQ™ Cow Collars to Waikato Milking System's DairyHQ™ Parlour Management System. The CowTRAQ™ analytics, combined with information from your parlour, gives you a holistic overview of both individual animal and herd performance.

ACTIONABLE HERD INSIGHTS REAL-TIME

The right information at the right time for the right person. Anytime, anywhere.

Animals to check

Worklist of animals to check including report of their change in behaviour that provides insight into possible health issues of each cow on the list.

Heat detections

Worklist of cows in heat, including advice on their optimal insemination moment for effective insemination with the highest chance of conception and additional reproduction insights.

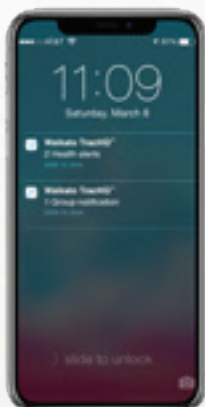
Urgent attentions

Alerts when a cow or group behaviour deviates and urgent intervention is needed to prevent or solve an issue.



Dashboard

Widget-based overview of the most important alerts, to-do lists and reports.



Herd Performance Trends

- Group Eating Pattern: 48-hour report showing the percentage of all cows in a group eating simultaneously.
- Group reports showing day totals per activity including herd benchmark.

Health Monitoring

- 48-hour report showing complete time spent of a cow across all activities.
- Reports showing her day totals per activity including group benchmark.

Disclaimer: Not all products and features are available for all milking parlour configurations. Please consult your local Waikato Milking Systems dealer for the solution that suits your milking requirements.

DAIRYHQ™ PARLOUR MANAGEMENT SYSTEM

Drive your milking productivity and performance with intelligent and intuitive dairy management.

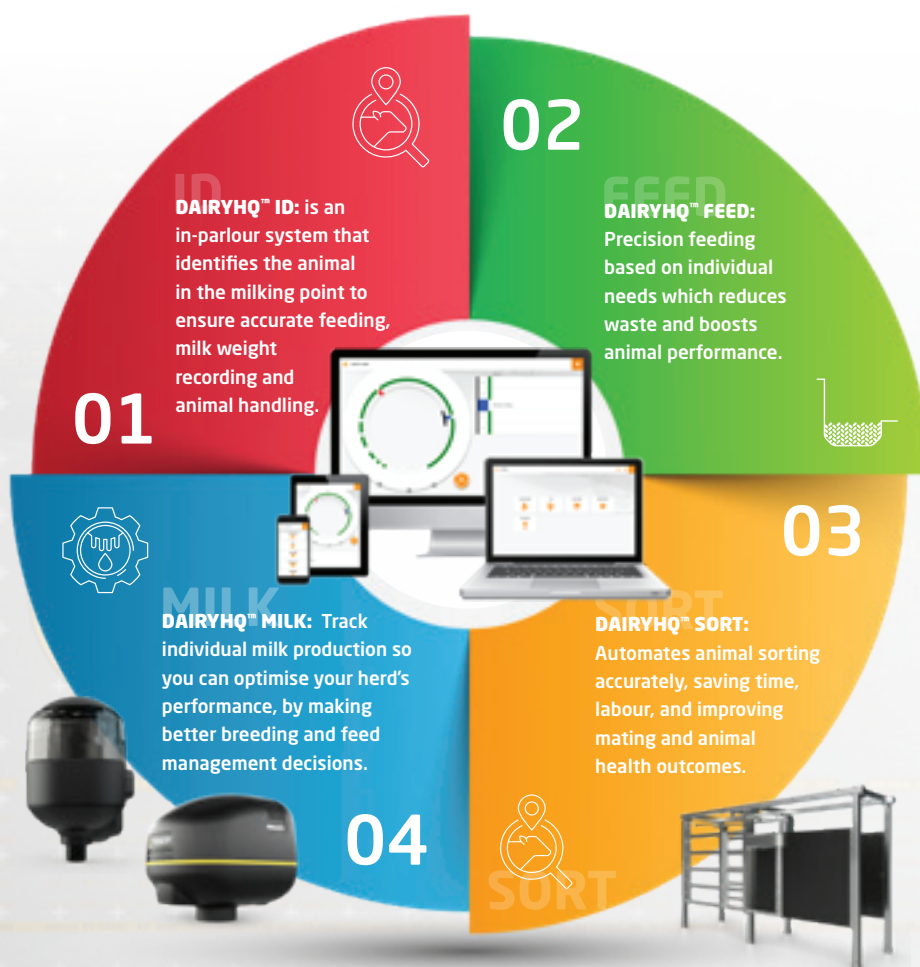
DAIRYHQ™ PROVIDES YOU WITH BETTER DATA, SO YOU CAN MAKE BETTER DECISIONS

By incorporating the DairyHQ™ Parlour Management System alongside your Waikato Milking Systems automation equipment, you can make better decisions to optimise your milking operation and profitability.

There are several critical factors that impact dairy farming profitability including efficient labour utilisation, enhanced working conditions, optimal resource management, and data-driven decision-making. DairyHQ™ allows you to harness these resources to your advantage, by continually monitoring and overseeing key aspects of your milking operation.

This enables you to focus on accurately recorded and processed data to make informed decisions - including animal breeding for genetic enhancement, herd culling, precise feed budgeting, and optimally timed artificial insemination.

In doing so, you can significantly reduce wastage across various aspects of your parlour, from feed costs to veterinary expenses, to energy consumption. This data-driven decision making enables you to fine-tune your herd, resulting in a stronger, more productive, and more efficient operation.



SCAN

TO WATCH VIDEO AND
LEARN MORE

ANIMAL MANAGEMENT



DAIRYHQ™ ID

Advanced animal identification system that reads an animal's RFID tag

GET TO KNOW YOUR COWS EVEN BETTER WITH ID



DairyHQ™ ID is an advanced animal identification system that reads an animal's RFID tag and assigns unique animal management numbers to milking points, streamlining in-stall feeding, and data collection during milking.

By accurately identifying and collecting precise data for each animal in the milking point, DairyHQ™ ID eliminates the need for the constant monitoring of each animal during milking and manual record-keeping. The system makes data collection and management more efficient to enhance decision-making, increase efficiency and increase profitability. DairyHQ™ ID provides seamless integration into Waikato Milking Systems milking point controls, features a modern user interface on a range of digital devices, and is designed in conjunction with farmers, for farmers.



In a **rotary parlour**, animals pass under an RFID antenna, enabling the system to identify each animal and verify its location in the milking point, before transmitting data to the DairyHQ™ server for processing.

DAIRYHQ™ FEED

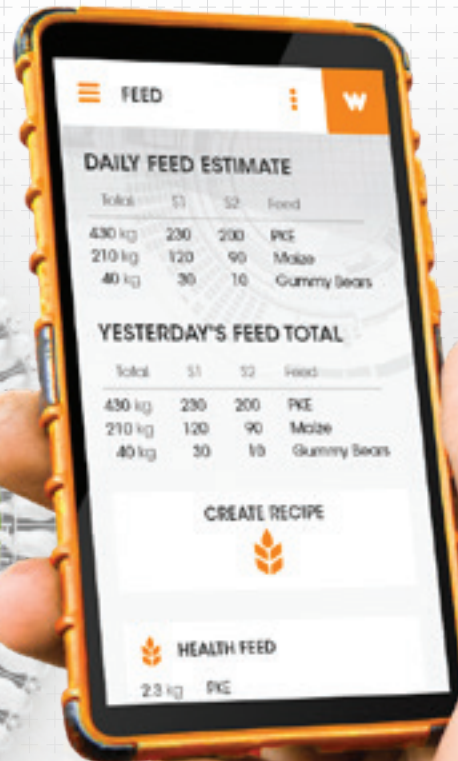
Providing feed allocation to individual animals based on animal-specific parameters

FEED CUSTOMISATION IMPROVES HEALTH, GROWTH, AND MILK PRODUCTION



DairyHQ™ FEED provides feed allocation to individual animals based on animal-specific parameters to ensure efficient feed utilisation to improve health, growth and milk production.

By identifying each animal from DairyHQ™ ID data, the system extracts each animal's allocated feed ration and dispenses the correct feed recipe to the animal. This prevents the wasteful inefficiency of blanket feeding that overlooks individual animals' needs. DairyHQ™ FEED's customised feed rations based on specific groupings maximises feed budgets. It also allows adjustments, especially during adverse weather conditions, leading to enhanced production and improved animal health. With native multi-feed type dispensing, intuitive feed head calibration, and comprehensive feed reporting, DairyHQ™ FEED allows for the seamless management of up to six types of feed. The 24V DC outputs interface with feed head control contactors ensuring precise operation. Standalone blanket feeding is available in the event of the system going offline.



DAIRYHQ™ SORT

Automates cow sorting for efficient herd management.

RELIABLE SORTING | REDUCED LABOUR



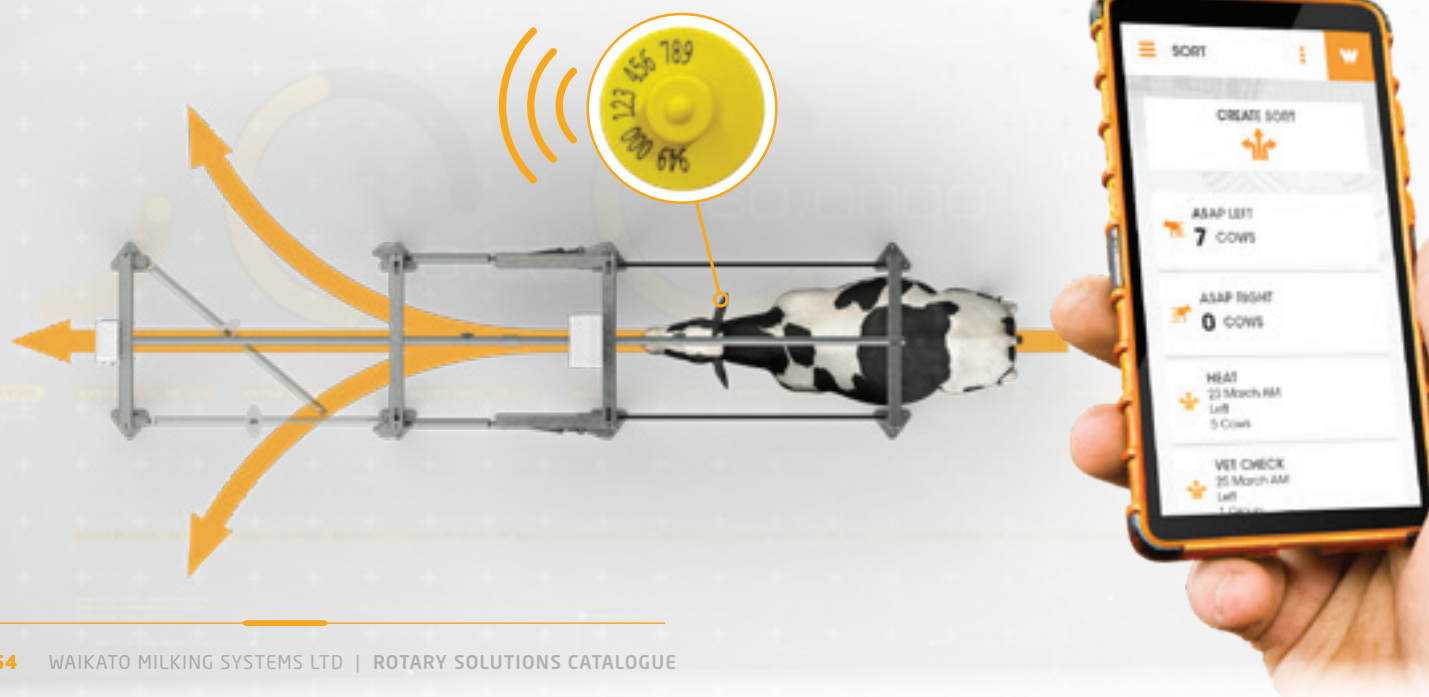
A key challenge farmers face is ensuring reliable animal sorting to avoid issues with poor mating spread and animal health caused by missing animals in the sort.

DairyHQ™ SORT effectively resolves these issues by providing reliable automatic sorting - which significantly reduces the labour required in the parlour. The system provides several benefits, including the ability to easily add animals to the sort list during milking, either through the user console or a mobile device. Head and/or health alert animals are also automatically added to the sort list via the CowTRAQ™ interface.

DairyHQ™ SORT also allows for the easy importing of CSV sorting lists for larger sorts, making it a versatile solution for your farm.

The DairyHQ™ SORT system allows you to:

- Create a sort function to automatically hold selected animals for health reasons, or for culling.
- Schedule animals to be sorted on a specific date and milking session.
- Select specific groups of animals to be sorted.
- Automatically sort animals that present at milking with faulty, or no identification tags, so they can be replaced.
- Sort animals with new identification tags that are not registered with your farm's herd database.
- Detect which animals in your herd were not present at milking time via the sort report.
- Apply a quick sort to a cow using the "Sort ASAP" feature if a cow presents with a problem and needs to be held for inspection at the end of milking - bypassing the need to set a date and reason for the sort.



DAIRYHQ™ MILK

Collects detailed animal milking data from your milking machine allowing you to monitor milking performance

MONITOR YOUR COWS MILK PERFORMANCE AND OUTPUT



DairyHQ™ MILK collects detailed animal milking data from your milking machine and associates it with specific animals in your herd*, so you can monitor their milk performance and output. It then presents this information in a user-friendly format, making it easy for you to access and understand.

The system connects seamlessly with your Waikato Milking Systems automation equipment and communicates directly with the DairyHQ™ server via the DairyHQ™ MILK controller. As your cows are milked, various status messages are relayed to the DairyHQ™ server, such as milking start and end times, alerts, yield information, and more. DairyHQ™ captures and logs this data for each animal, creating a comprehensive picture of the milking process.

**Requires DairyHQ™ ID*

BETTER DATA, BETTER DECISIONS

A common challenge faced by dairy farmers is a lack of detailed milking information, including yield data and alerts. Additionally, relying solely on occasional herd testing for data may not provide a complete and up-to-date picture of animal production. DairyHQ™ MILK addresses these pain points by offering real-time, comprehensive data at your fingertips.

The comprehensive milking data provided by DairyHQ™ MILK allows you to make more informed decisions based on milking performance and animal health - including feeding, breeding, culling and assessing animal value. By transforming your decision-making process, you can optimise your farm management.

DairyHQ™ MILK provides seamless integration with existing Waikato Milking Systems milking point controllers, enhancing your milking data management experience. The system also features a high-speed wireless link from the server to the inside of the rotary, ensuring fast and efficient data transfer. With DairyHQ™ MILK you can consistently monitor milking hardware for errors, so you can proactively manage plant maintenance.



PLATFORM POSITIONING SYSTEM

Automated control over the exact position of the rotary.

REAL TIME AUTOMATED CONTROL OVER SPECIAL ROTARY FUNCTIONS.

The Platform Positioning System precisely measures the rotary's positioning, making it an integral part of the DairyHQ™ Parlour Management System.

The patented vision technology system precisely measures the rotary's position, ensuring consistent, accurate alignment. When integrated with DairyHQ™, it enables accurate ID and precise feed-drop timing. Additionally, it supports specialised rotary functions such as fixed-point take-off, claw drop, and Cow Restraint control.

Strategically positioned near the top of the rotary gland and securely protected by a round metal bracket, the design ensures that the sensors remain free from water, feed dust, and potential interference from animals. By safeguarding these critical components, it enhances operational reliability and supports consistent, long-term performance.

ADVANTAGES

The Platform Positioning System incorporates state-of-the-art photo optics to ensure accuracy and reliability.



High Performance Accuracy

High resolution platform position readings allow for fine-tuning ID and feed-drop moments without the need to adjust steel-work, when used with DairyHQ™.



Ease of Installation

Easily fits to any size rotary with no on-site welding required, offering convenience, and reducing installation time.



Special Rotary Functions

Supports specialised rotary functions such as fixed-point take-off, claw drop, and Cow Restraint control.



SORT GATE 2600

Sort your animals at the end of milking with the economical, entry-level Sort Gate 2500.

INCREASED ACCURACY, WITH BETTER COW FLOW

With an additional set of stop gates, the accuracy of your sorting, significantly increases with the Sort Gate 2600, by creating a gap between the animals.

If the first cow in the gate is to be sorted but is hesitating to move into the sorting yard, the stop gates will prevent the second cow from pushing through and being inadvertently sorted. Similarly, if the first cow is going straight through and the second cow is to be sorted, the stop gates will detain the second animal until the first is clear of the sort gates, then activate the gates and allow the second cow to sort.

The Sort Gate 2600 also integrates seamlessly with DairyHQ™ parlour management and CowTRAQ™ Collars. Containing high quality sensors, electronics and pneumatics, the Sort Gate 2600 is also constructed from long lasting and robust galvanised steel.

ADVANTAGES

The Sort Gate 2500 is a cost-effective and reliable entry-level sorting system.



Three-way sorting gates

Utilises a pneumatic system to open and close quietly, promoting good cow flow.



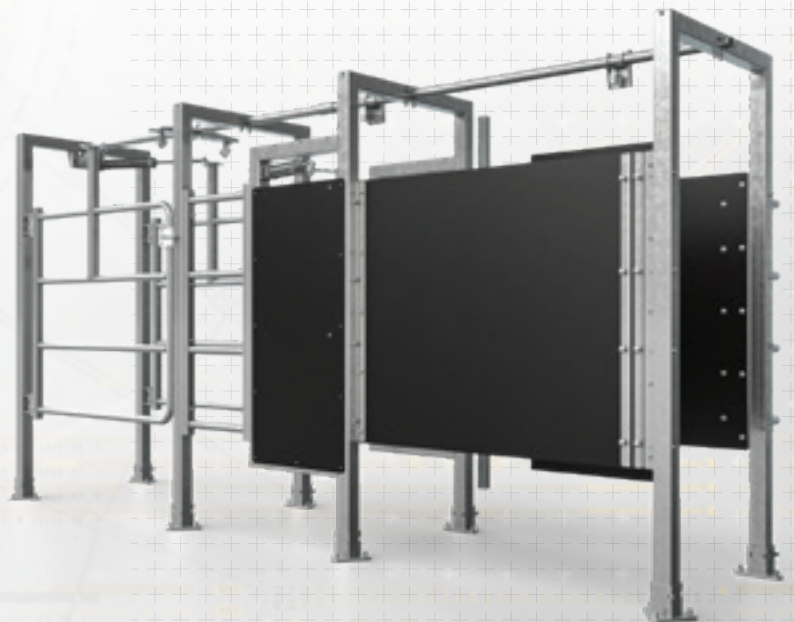
Animal identification sensors

Features animal ID sensors built into the panels to automatically activate the gate.



Low cost & reliable

An economical solution to reduce your workload in the parlour with reliable sorting.



SORT GATE 5500

Sort your larger cow breeds accurately, with the robust and durable premium-level Sort Gate 5500.

THE STRONGER SORTING SYSTEM FOR LARGER COWS

The Sort Gate 5500 is our flagship, premium-level, fully featured system for sorting large cow breeds on larger-scale dairy farms while giving you the reliability, durability, accuracy and quality you're looking for.

The heavy-duty frame on the Sort Gate 5500, better serves both larger animals and large-scale 24/7 farming operations. The double acting sort gates allow for increased opening speed to catch faster moving animals, increasing sorting accuracy.

A wider opening gap reduces the turning angle for a sorted cow, thereby improving cow flow. The Sort Gate 5500 also has the option of a roof over the gate for increased cow comfort and reduced exposure of control components to the elements.

The use of high-quality sensors, electronics, and pneumatics ensures longevity.



ADVANTAGES

The Sort Gate 5500 is a premium-level sorting system for larger breed animals.



Designed for larger animals

Heavy duty frames suit larger cows, and large-scale dairy farms.



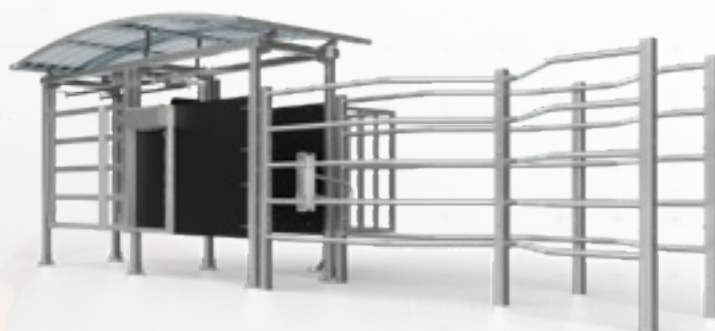
Durable and robust

Constructed from heavy-duty galvanised steel for strength and durability.



Double-acting, fast opening gates

Provides more room for cows to turn, and better cow flow to the correct sort area.



60,000



HYGIENE

Reduce your labour costs and maximise your productivity with our range of state-of-the-art automated technologies.

SMARTSPRAY AUTOMATED TEAT SPRAYING

Automated teat spraying that reduces your labour and increases your efficiency.

MAXIMUM TEAT COVERAGE, WITH MINIMAL LABOUR

SmartSPRAY is an innovative automatic teat spray system designed specifically for rotary dairies, that replaces the need for manual teat spraying and teat dipping before and after milking.

With no operator input required during milking, SmartSPRAY greatly reduces labour while ensuring maximum coverage regardless of the cow's position in the bail. The spray nozzles on the bullets can be rotated to cater for a wide variety of cow sizes and different breeds. The bullets are easy to clean and made of durable material designed to withstand years of harsh treatment under the cows at milking time.

The SmartSPRAY system is controlled directly by Waikato ECR-S or ECR Plus cup removers. When combined with Waikato Milking Systems cup removers, SmartSPRAY can be set so it doesn't spray animals that are returning to the operator.

It's possible to fit the SmartSPRAY to other rotary systems using an interface to connect with other types of cup removers.



Bullet also works as a leg spreader to make cupping more effective

ADVANTAGES

The SmartSPRAY system automates teat spraying to save time and labour.



Sprays every cow, every time
Reduces labour in the parlour while ensuring maximum coverage and optimum teat condition



Easier spraying, easier cupping
The spray system also acts as a leg spreader to make cupping easier



Pre-milking option
A pre-milking spray option is available (only with DairyHQ™ Dairy Management) which reduces labour



WAIKATO SPRAY ARM

Automate your pre and post spraying routine for your rotary parlor, reducing labor costs.

ACCURATE AND RELIABLE, SAVING LABOR COSTS

The Waikato Spray Arm is a game changing automatic teat spraying system for large fast-moving rotaries.

The Waikato Spray Arm system allows for pre-spray and/or post-spray units to be installed, removing expensive labor units from your operation.

A series of advanced sensors accurately locate the cows position on the platform as she nears the exit / entry areas. This information is then communicated directly to the controller. The stall sensors determine the direction of the platform, measures the speed and activates a spray sequence. The cow sensor detects if there is a cow in the stall. No cow, no spray, no waste.

Thorough teat spray coverage of all four teats is achieved with the use of two independently controlled spray nozzles in each arm, that extend under the cows' udder as the rotary platform passes. The Spray Arm Controller can easily adjust the sequencing and spray volumes to suit your requirements.

Models available:

- **Waikato Spray Arm Exact:** Single spray arm mounted on a stationary pole. Sprays each stall as it passes. Suitable for 78 point and below. For speeds as fast as 5.5sec/stall.
- **Waikato Spray Arm Rapid Dual:** Two spray arms mounted on a stationary pole. Sprays each stall as it passes. Suitable for 80 points and above. For speeds as fast as 3.8sec/stall.



ADVANTAGES

The Waikato Spray Arm uses advanced sensor technology to ensure accurate spraying coverage, every time.



Easy to install

Easy to install and inexpensive to maintain.



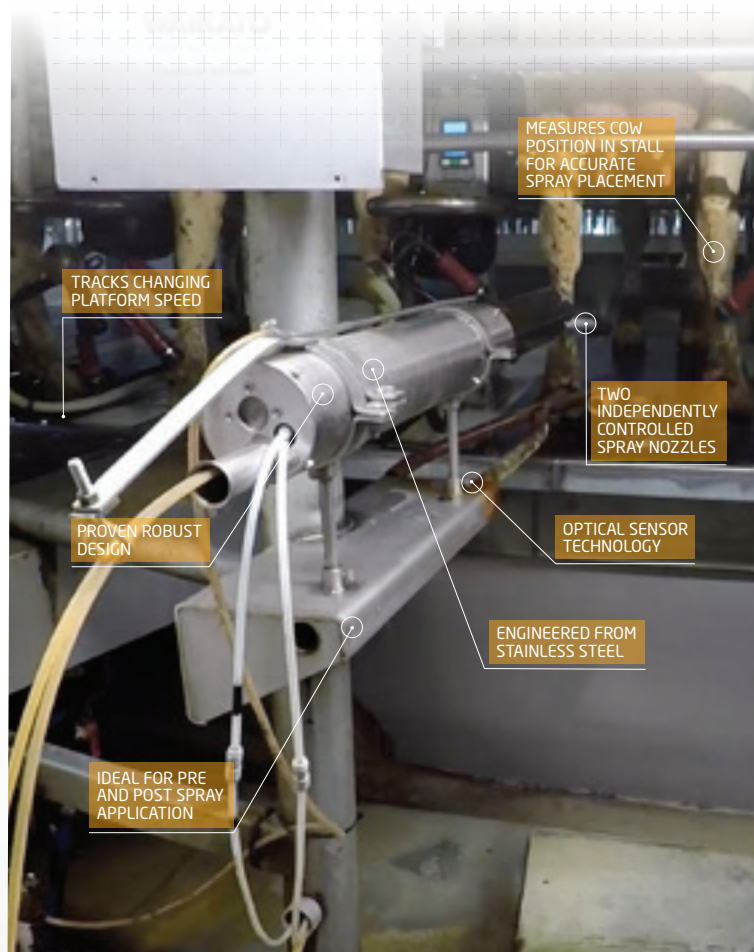
Reliable and precise spray pattern.

Advanced sensors accurately locate the cow.



Affordable Automation

For large, fast moving rotaries.



WALKOVERSPRAYER

Improve your teat spraying accuracy and reliability with the WalkoverSPRAYER's intelligent sensor technology.

THE AUTOMATIC TEAT SPRAYING SYSTEM TO ENSURE ACCURACY, EFFICIENCY & RELIABILITY

The WalkoverSPRAYER has been designed for herringbone and parallel dairies to accurately teat spray cows as they enter or exit the milking parlour to improve your efficiency and spray efficacy.

The system identifies individual cows and automatically adjusts the spray timing based on cow speed, to ensure accurate spray coverage regardless of how fast the cow is moving over the unit.

At a normal walking pace the WalkoverSPRAYER automatically deploys two spray nozzles to accurately spray all four teats, and deploys all four nozzles if the cows are moving faster.

The WalkoverSPRAYER suits small, medium and large-size dairies and solid panels can be fitted to the yard rails on each side of the unit to help prevent spray drift if the system will be located in a windy environment.



ADVANTAGES

The WalkoverSPRAYER uses intelligent sensor technology to ensure excellent coverage, every time.



Optical sensor technology for accurate coverage

Automatically deploys two or four spray nozzles according to the speed of the cows entering or exiting the milking parlour.



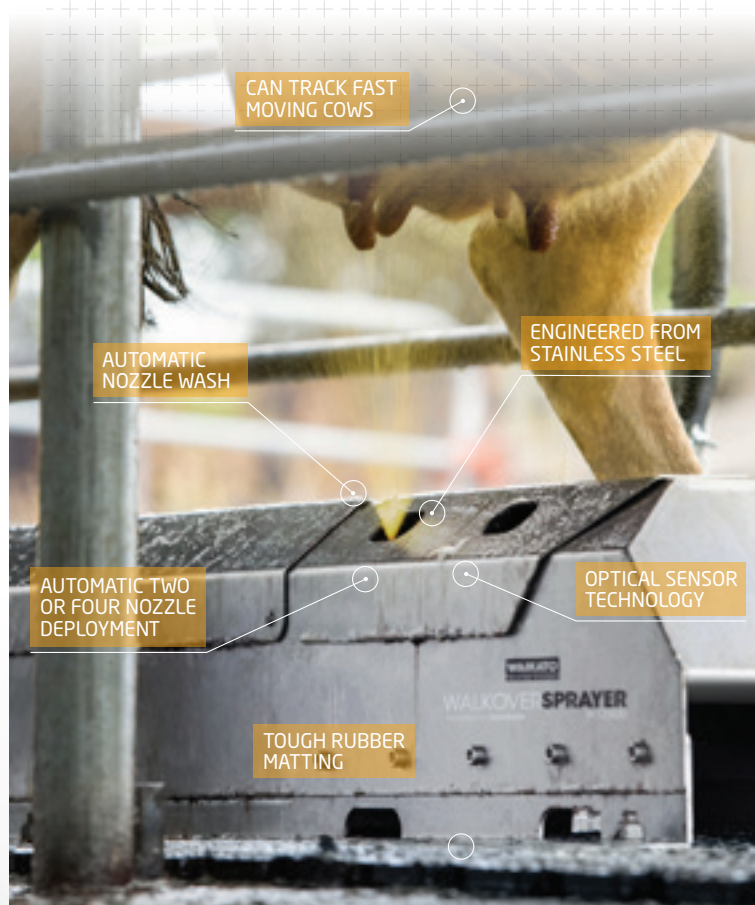
Automatic nozzle wash function

Reduces teat spray build-up and ensures that the nozzles are always clean and clear of contaminants.



Robust construction

Engineered from stainless steel with no moving parts for durability, reliability, longevity and performance.



SMARTWASH AUTOMATED WASH SYSTEM

A pre-programmed wash controller to save on labour and increase your efficiency.

A COMPREHENSIVE AND AUTOMATIC WASH, AT THE TOUCH OF A BUTTON

SmartWASH is a completely programmable automated wash system for your milking machine, with a selectable range of comprehensive wash scenarios.

With the versatility to manage any wash scenario for your plants requirements, SmartWASH enables you to meet all your hygiene standards and regulations.

The SmartWASH controller has been designed to provide total flexibility and constant reliability, and the modern touchscreen technology ensures a simple and user-friendly interface for the operator.

At the touch of a button you can select a wash scenario to suit your requirements and manage an efficient cleaning regime for your milking system.

When using a SmartWASH system, this means there is no requirement for operators to be handling chemicals.



ADVANTAGES

The SmartWASH system's programmed wash scenarios save time and labour.



Automatic wash control

Selectable wash scenarios created from a comprehensive menu, at the touch of a button.



Day by day programming

A repeatable, efficient and reliable wash cycle every time



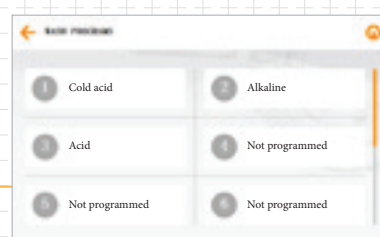
Programmable acid, alkali or sanitiser washes

Accurate detergent dispensing minimises cleaning chemical wastage

Main Menu
Programming



Wash Function
Fill Options



Daily Programs



PLANNING YOUR DAIRY

Have you thought of all the steps that are involved...

1

EXPERIENCE THE WAIKATO MILKING SYSTEMS DIFFERENCE

Visiting existing Waikato Milking Systems dairies is a great way to experience the Waikato Milking Systems difference and gain insight to the technologies and dairy layouts which will work for you. Your local Waikato Milking Systems representative or dealer will introduce you to farm owners in your area.

2

PERMITS AND CONSENTS

There are many regulations you must follow when building a new dairy and these vary between regions and countries. Your local Waikato Milking Systems representative or dealer understands the requirements and will be able to assist you.

3

CHOICE OF CONTRACTORS

Meet as many contractors as possible and ask for estimates to budget with. Select a few contractors that you would like formal quotes from and choose those who will be best to work with.

4

PLAN THE DESIGN

Draw up some concepts and discuss these with your contractors so they can do some preliminary plans for approval. Make sure you discuss your requirements clearly so you know exactly what you are getting for your money.

5

REVIEW YOUR BUDGET

A reassurance, when buying from Waikato Milking Systems, is that if your new build budget will not allow your wish-list of technology, our modular and integrated system will allow you to retrofit various elements as you can afford them.

6

MANAGING YOUR CONSTRUCTION

The variety of elements which need to be considered, and undertaken, in order and to time (avoiding unnecessary delays and additional cost) usually require the services of a project manager. Talk to your local Waikato Milking Systems representative, dealer or a preferred contractor about the best person for this job on your farm.

7

STAFF TRAINING

Your Waikato Milking Systems representative or dealer will spend time with you to ensure you and your staff are familiar with all aspects of your new dairy.

8

ONGOING USE AND MAINTENANCE

Establishing good processes takes time and they need to be regularly reviewed. Your Waikato Milking Systems representative or dealer will be able to help you with a maintenance plan to ensure the longevity of your new plant.

THINGS YOU NEED TO CONSIDER

- ☐ Building permits
- ☐ Site approval
- ☐ Building
- ☐ Painting of building
- ☐ Drainage to ponds / effluent
- ☐ Drains under receiver, vat and wash tub
- ☐ Yard - circular or rectangular
- ☐ Vet holding yard
- ☐ Loading race
- ☐ Service tunnel under platform
- ☐ Backing gates - water or electric
- ☐ Steelwork around yards
- ☐ Platform type - concrete, composite or steel
- ☐ Milking machine
- ☐ Compressor
- ☐ Water works
- ☐ Shed reticulation
- ☐ Wash water recirculation from vats
- ☐ Hot water cylinders
- ☐ Wash down points around the dairy
- ☐ Yard boom
- ☐ Water for backing gate
- ☐ Wash down and sump pumps
- ☐ Cooler pump
- ☐ Machine and vat wash systems
- ☐ Vat wash pump
- ☐ Farm water supply
- ☐ Toilet - sewage
- ☐ Effluent disposal around the farm
- ☐ Teat spray systems
- ☐ Sorting gate systems
- ☐ Drenching systems
- ☐ Feed systems on the platform
- ☐ Electrical work
- ☐ Power to the site
- ☐ Transformer sizing
- ☐ Tanker track position
- ☐ Site works
- ☐ Refrigeration





GLOBAL HEADQUARTERS

T: +64 7 849 8755 **F:** +64 7 849 5923

29 Innovation Way | Northgate Business Park, Horotiu | Hamilton, New Zealand

PO Box 20325, Hamilton 3241 | New Zealand | customerservice@waikatomilking.com

AUSTRALIAN OFFICE

exports@waikatomilking.com

UK OFFICE

Waikato Milking Systems UK Limited, C/- M R Dean Ltd

Unit 1 & 2 Bloomsbury, Weston Heath, Shifnal, Shropshire, TF11 8RT

ukwarehouse@waikatomilking.com

IRELAND OFFICE

Unit 26, North Point Business Park, New Mallow Road, Cork City, Ireland, T23 X9R7

ireland.warehouse@waikatomilking.com

Phone: +353 21 2290823

USA OFFICE

Waikato Milking Systems USA

5601 Manufacturers Drive, Madison WI, 53704 USA

Phone toll free: +1 866 648 6455

CHINA OFFICE

Waikato Milking Systems China

3rd. Floor, Building 7, No. 1515 North Huifeng Road,

Fengxian District 201401

Shanghai, China

exports@waikatomilking.com

waikatomilking.com



Growing the value of precision dairy farming

© 2026 Waikato Milking Systems Ltd. All rights reserved.